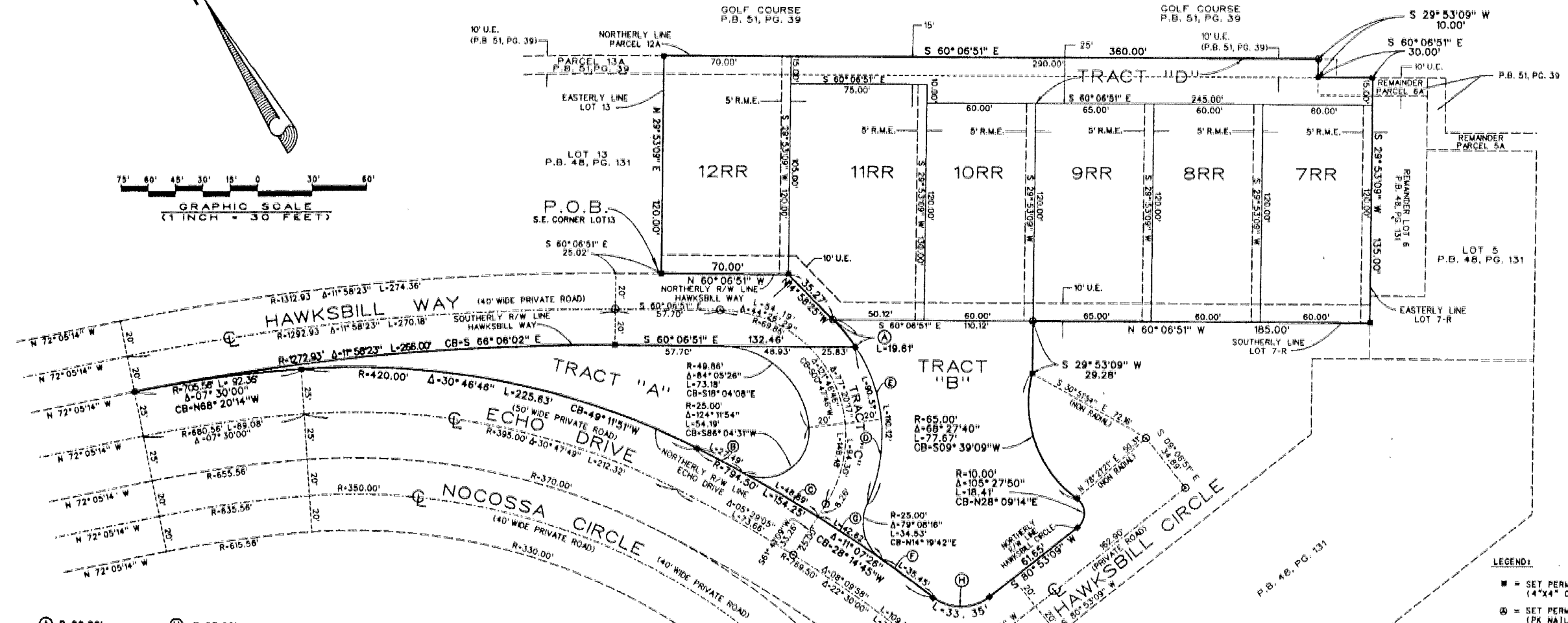
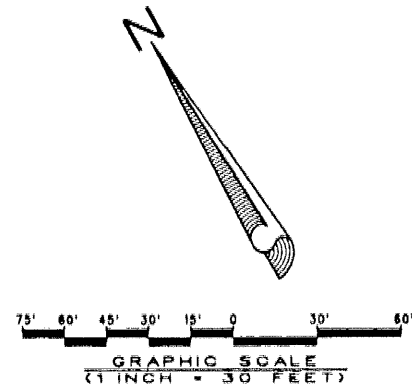


# LOXAHATCHEE CLUB AT MAPLEWOOD PLAT NO. 1B OF PHASE II

BEING A REPLAT OF LOTS 7-R THROUGH 11-R OF THE LOXAHATCHEE CLUB AT MAPLEWOOD PLAT NO. 1A OF PHASE II, AS RECORDED IN PLAT BOOK 86, PAGES 109 THROUGH 110 PUBLIC RECORDS OF PALM BEACH COUNTY, FLORIDA AND BEING A REPLAT OF LANDSCAPE TRACT "A", LOT 12 AND A PORTION OF HAWKSBILL WAY, AS SHOWN ON THE LOXAHATCHEE CLUB AT MAPLEWOOD PLAT NO. 1 OF PHASE II, AS RECORDED IN PLAT 48, PAGES 131 THROUGH 134, PUBLIC RECORDS OF PALM BEACH COUNTY, FLORIDA. AND BEING A REPLAT OF PARCEL 12A, AS SHOWN ON THE LOXAHATCHEE CLUB AT MAPLEWOOD PLAT NO. 2 OF PHASE II, AS RECORDED IN PLAT BOOK 51, PAGES 39 THROUGH 53, PUBLIC RECORDS OF PALM BEACH COUNTY, FLORIDA

LYING IN SECTION 11, TOWNSHIP 41 SOUTH, RANGE 42 EAST, TOWN OF JUPITER, PALM BEACH COUNTY, FLORIDA  
 JANUARY, 2001 SHEET 3 OF 3



- (A) R-89.86'  
Δ-12° 30' 04"  
L-19.61'  
CB-N10° 03' 58" W
- (B) R-794.50'  
Δ-01° 58' 58"  
L-27.49'  
CB-N32° 49' 00" W
- (C) R-794.50'  
Δ-03° 30' 41"  
L-48.89'  
CB-S30° 04' 11" E
- (D) R-89.86'  
Δ-57° 42' 46"  
L-90.51'  
CB-N25° 02' 27" E
- (E) R-89.86'  
Δ-70° 12' 50"  
L-110.12'  
CB-N18° 47' 25" E
- (F) R-794.50'  
Δ-02° 33' 24"  
L-35.45'  
CB-N23° 57' 44" W
- (G) R-794.50'  
Δ-03° 04' 25"  
L-42.62'  
CB-S26° 46' 38" E
- (H) R-25.00'  
Δ-76° 25' 50"  
L-33.35'  
CB-N60° 53' 58" W

BEARING BASE:  
 BEARINGS SHOWN HEREON ARE ASSUMED AND ARE BASED ON THE EASTERLY LINE OF LOT 13: (P.B. 48, PG. 131) SAID LINE BEARS N 29° 53' 09" E (ALL OTHER BEARINGS SHOWN HEREON ARE RELATIVE THERETO.)

AREA TABULATION	
LOT 7RR	7,200 SQ. FT. OR 0.1653 ACRES
LOT 8RR	7,200 SQ. FT. OR 0.1653 ACRES
LOT 9RR	7,800 SQ. FT. OR 0.1791 ACRES
LOT 10RR	7,200 SQ. FT. OR 0.1653 ACRES
LOT 11RR	9,439 SQ. FT. OR 0.2167 ACRES
LOT 12RR	8,400 SQ. FT. OR 0.1928 ACRES
TRACT A	8,481 SQ. FT. OR 0.1947 ACRES
TRACT B	14,104 SQ. FT. OR 0.3238 ACRES
TRACT C	4,519 SQ. FT. OR 0.1037 ACRES
TRACT D	6,950 SQ. FT. OR 0.1595 ACRES
<b>TOTAL</b>	<b>81,293 SQ. FT. OR 1.8662 ACRES</b>

- LEGEND:
- = SET PERMANENT REFERENCE MONUMENT (4"x4" CONCRETE MONUMENT "PRM LB4431")
  - ⊙ = SET PERMANENT REFERENCE MONUMENT (PK NAIL & BRASS DISK "PRM LB4431")
  - ⊙ = PERMANENT CONTROL POINT

- ABBREVIATIONS:
- R/W = RIGHT OF WAY
  - O.R.B. = OFFICIAL RECORD BOOK
  - P.B. = PLAT BOOK
  - PG. = PAGE
  - U.E. = UTILITY EASEMENT
  - R.E. = RECIPROCAL MAINTENANCE EASEMENT
  - P.O.B. = POINT OF BEGINNING
  - R = RADIUS
  - Δ = DELTA ANGLE
  - L = ARC LENGTH
  - CB = CHORD BEARING
  - SQ. FT. = SQUARE FEET
  - ℄ = CENTERLINE

**LIDBERG LAND SURVEYING, INC.**  
 875 West Inlandtown Road, Suite 200, Jupiter, Florida 33458 TEL: 561-748-8454

CAD: K:\LSTATION\PLATS\86-109\0930306\0930306.DGN			
REF: K:\LSTATION\PLATS\86-109\0930306\0930306.DGN			
FLD.	FB.	PG.	JOB 00-093-306
OFF. E.C.			DATE NOV. 2000
CKD.		SHEET OF	DWG. 000-000P